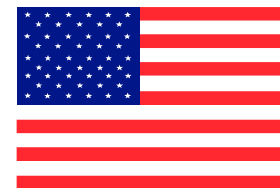


Direction and Suggestions for Installing 66- 67 Pontiac GTO Trunk Panel Kit

718-5

*Thank you for buying
our trunk upholstery panels!*



Made In The USA

www.customtrunkpanels.com

Please Note; [Test fit all panels before applying upholstery.](#)

Based on your particular car, you may find it necessary to custom-trim here and there, depending upon the type of material you choose to cover the trunk kit panels, how much foam you add or how you decide to custom finish your panels. If you find it necessary, a quick trim adjustment using an electric sander with 80 grit paper or a rasp file is all that will be required.

For some installations, it will be necessary to remove the spare tire hold down brackets using a cutoff wheel.

A typical stock trunk area is on most sedans and hardtops. This is where the installation process is the same, regardless. Trim sanding is all that will be needed. For convertible, it will be necessary to trim the panels.

Tech Help 724-418-1003 ask for John



This is a picture of the bottom floor panel for the GTO. There are 5 pieces to this kit. The one piece that is optional fits up against the latch wall of the trunk. You can use it or you can carpet up the back wall without using this 5th piece, it's your option. I suggest that a piece of carpeting material is put down first and glued across the back of the trunk, near the trunk latch, this is only a suggestion, then put the panel kit down as directed. The bottom panel needs to be placed in the trunk right side first. Set the panel on the floor of the trunk then slide it back toward the rear of the trunk. It's your option as to cutting off the hold down bracket. For this installation it's not necessary.



This installation is on 1967 GTO hardtop and will be the same for a 1966 GTO. Convertible installation with minor changes.



Like most trunks that are not finished it does not look too good right now, but watch what can happen.

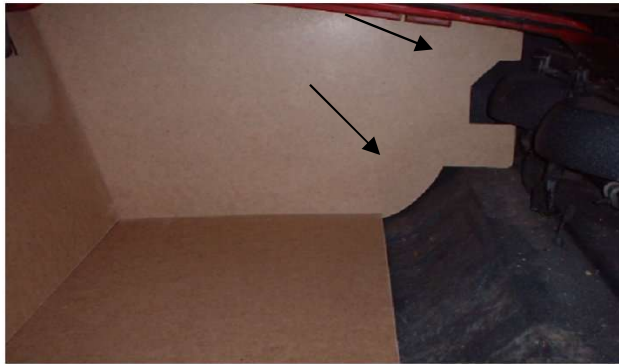


The first panel in fits right up to the jack hold down on the right side of the trunk. Note the arrow with panel in front of the hold down bracket.

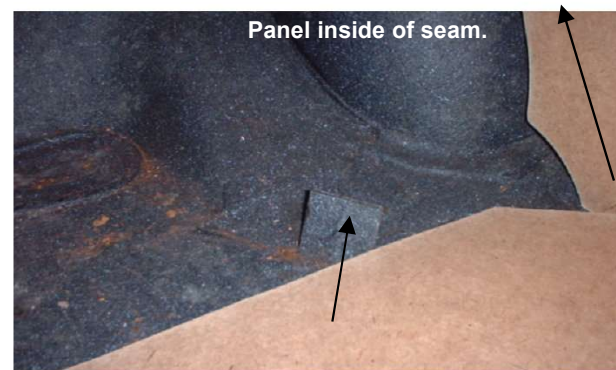


On the left side move the panel back against the upslope of the trunk, note the arrow.

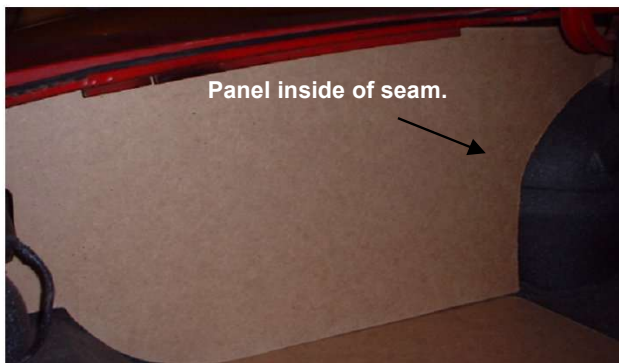
The next panel to go in is the right side. It has a cutout for the light assembly and may require taking the bulb out temporarily to get this panel installed. The panel fits the curvature of the trunk when slid back, note the arrows. The panel should fit inside of the fender well seam. You can now clearly see that the panel fits in front of the hold down, note the arrow. The next panel is the left side panel which differs from the right side panel. Keep it also inside the fender well seam. The panels fit much tighter with material on them and will not move once set into place. Please Note: Adjustments to the panels fit can be made with a rasp or a orbital sander using 80 grit sanding paper.



Next is the right side panel, note that there is a right side and a left side panel with deviations for each side.



With the right side panel in make sure it is up against the fender well but on the inside of the fender well seam.



The left side is configured differently with a straighter cut on the fender well. Keep the light harness out of the way during installation.



On the left side move the panel back against the light housing for a better fit.

Next is the back hinge panel to be put in place. Slide the top in first then push in the bottom. It may get a little tricky here trying to keep the side panels from moving in while putting this back panel in place. Once it is in place then you can adjust the side panels to fit properly. There is a slight tilt to the back hinge panel or your option is to trim the bottom edge of this panel for a more straight up and down look to it. Once upholstery is put on the panels all of the gaps and seams will be tight.



Next is the backside panel, slide this panel in top first with a tilt toward the rear of the trunk.



The back panel will fit against the two side panels as shown in the pictures.



The left side is tight against left side panel which is straight up for a better look to the side panel.



There is a slight tilt on the back panel or you can trim the bottom edge of the back panel for a flatter look if you desire.

The last panel is the back trunk latch panel. This piece is optional, but it does give the trunk a more finished look. The bottom edge of this piece fits up against the back edge of the floor panel and tilts back to the edge of the trunk, note the arrows. In order to this panel fit flush with the edge of the trunk, it will be necessary to either notch the panel where the light housing hits the panel or cut the light housing at an angle that allows the panel to fit flush. It's your choice or not use this piece and carpet up under the light housing.



You now have 4 panels in place and will need to finish the trunk off with the back trunk latch panel.



The back trunk latch panel will fit against the two side panels as shown in the pictures. It has a tilt to it and rests on the edge of the floor panel.



Now all 5 panel pieces are in place ready to upholster with your choice of material.



This GTO trunk panel kit will be finished with a black naugahyde.

Now Available for Most Classic Car's Trunk Panel Kits for Finishing and Trunk Upholstery

- Chevy 1955,56,57 Panel Kit No. 417-4
- Camaro 1967,68,69 Panel Kit No. 317-6
- Chevelle 1970-72 Panel Kit No. 517-7
- Chevelle 1968-69 Panel Kit No. 517-5
- Chevelle 1966-67 Panel Kit No. 516-4
- Chevy Impala 1962-64 Panel Kit No.917-4
- Nova 1968-72 Panel Kit No. 817-5
- Mustang1964,65,66 Panel Kit No.617-5

Save time and money using our trunk panel kits from



www.customtrunkpanels.com